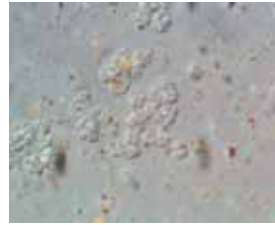


# Technical Specification Data.

*FastMoldRemoval.com can help you clean it, kill it and keep it from coming back.*



Ulocladium chartarum before



Ulocladium chartarum after

MMR is very destructive to the hyphae and mycelium of mold that grow into the substrate of building materials. Note MMR's devastating effect in the microscopic images.

## MMR - mold stain remover

**Active:** A proprietary blend of EPA-registered ingredients including sodium hypochlorite and surfactants.

**Description:** MMR mold stain remover is the industry's most reliable product for easily and immediately removing mold stains from building materials such as the wood found in attics and crawl spaces. It is also effective on other surfaces including, concrete, cinder block, hardboard, vinyl siding and composite decking.

No sanding, media blasting or encapsulation is required to quickly remove mold stains. MMR offers superior performance to bleach and hydrogen peroxide-based products. The application of MMR reduces labor, lowering expenses and increasing profits.

**Coverage:** MMR is a ready-to-use (RTU) product, available in 1g and 2.5g bottles. MMR covers between 175 -250 square feet per gallon, depending on the substrate.

**Cost:** \$29.99g.

## MPI Antimicrobial - EPA registered Surface Protectant/Coating

**Active:** 5%, 3-(trihydroxysilyl) propyldimethyl-octadecylamine ammonium chloride.

**Description:** MPI is an EPA-registered, quaternary ammonium antimicrobial designed to inhibit the growth of damaging microbes such as bacteria, mold, mildew, fungus and algae. It is ideal for treating surfaces following cleaning and/or after mold remediation activities.

MPI is environmentally safe, permanent and does not give off volatile organic compounds (VOC's). Many conventional antimicrobials and biocides are designed to poison microorganisms. Most of those products are effective at killing, but have a limited range of effectiveness as they act quickly and then dissipate quickly.

MPI acts as a static agent designed to prevent growth or re-growth of unwanted microorganisms. It can be applied to most unfinished and/or painted surfaces, including wood, flooring, concrete, drywall, cinderblock, fabrics, carpets and many other surfaces.

MPI is a clear, breathable coating that dries quickly. It is biodegradable and approved for use in homes, offices, schools, hospitals, daycare centers, commercial structures, etc.

**Coverage:** MPI is typically fogged on and covers between 700 - 900 sq. feet per ready-to-use gallon based upon the device being used. MPI comes in 1 gallon bottles of concentrate product.

**Cost:** \$196.50 per concentrate bottle.



## Shockwave - EPA registered Quaternary Ammonium Disinfectant

**Active:** Dimethyl Benzyl Ammonium Chloride and Dimethyl Ethylbenzyl Ammonium Chloride

**Description:** ShockWave is an EPA-registered disinfectant, sanitizer, and cleaner designed specifically for mold remediation contractors. It is designed to meet numerous disinfecting, sanitizing, cleaning, and deodorizing needs. ShockWave is especially useful as an all-in-one product for treating wood framing, carpets, and other porous and nonporous surfaces as part of a complete mold remediation project. It is strong enough to be used as a hospital grade disinfectant.

Shockwave maintains over 130 organism kill claims, including *Aspergillus niger*, *Penicillium spinulosum*, *E. coli*, *Salmonella*, HIV, Hepatitis-B, Herpes, Poliovirus, and many other pathogenic and environmental microbial organisms. Effective in 98% soil load and in 781 ppm hard water, Shockwave is also registered for use against H5N1 Avian flu and for sewage/black water remediation.

**Coverage:** ShockWave is designed to be diluted two ounces per gallon of water, making it an economical solution for your cleaning, disinfecting, and sanitizing needs. ShockWave comes in 1g containers and in convenient 10-ounce bottles.

**Cost:** From \$17.99 to \$39.00 depending on the size of container.



# From the Attic, to the Basement and everywhere in-between.

You can rely on [www.FastMoldRemoval.com](http://www.FastMoldRemoval.com) for your mold-related projects. Product application is straightforward and employs a combination of products and processes to get quality results.

## Eliminate the Stain:

**MMR mold stain remover.** Apply MMR mold stain remover to quickly remove mold stains without breaking your back by sanding or media blasting.

The visual results following MMR not only blow away competing peroxide products - they should satisfy the owner, inspector, real estate agent and buyer. With a few more steps, you'll satisfy the hygienist too.

## Kill the Mold:

**Shockwave disinfectant.** Shockwave is an EPA-registered disinfectant / sanitizer / cleaner designed to handle any remediation. Shockwave was tested successfully at a 98% organic soil load as opposed to the EPA minimum and industry norm of 5%.

Shockwave is inexpensive, compatible with MMR and can be applied directly after an MMR application. It provides the peace of mind in knowing the mold was "killed" with an EPA-registered disinfectant.

## Remove the Debris:

**Source Removal.** Mold jobs subject to post-remedial verification require source removal. We suggest a thorough HEPA vacuuming. Bio-washing is an option, although more difficult in attics and crawls. These activities are always good practice, but optional if the project won't be tested in unconditioned areas. Passing air tests in conditioned areas typically requires containment and air scrubbing. Consider the Predator 1200 and Predator 600 portable air scrubbers.

## Prevent Future Mold:

**MPI Bound antimicrobial.** Because MMR cleaned the wood, traditional encapsulants are not needed. Instead, our MPI bound-antimicrobial can be fogged or applied with an electrostatic sprayer to offer a long-lasting, mold prevention coating. MPI acts as a clear, static agent designed to inhibit re-growth of mold. Although considered a luxury, more than a necessity, MPI still has a place in many jobs and will set your process apart from other service providers.

*So when you need to get it done, and done right, please know that you can rely on the products at [www.FastMoldRemoval.com](http://www.FastMoldRemoval.com). With quality customer service, quick order turnaround and timely pricing promotions, you can be sure that "We've Got Your Back!"*

**Effective for mold remediation and new construction mold prevention projects in the following structural areas:**

1. open walls
2. sub floors
3. attics and roof decking
4. sub-grade masonry
5. crawl spaces
6. framing materials

